

When is an emergency an EMERGENCY?

Jacquelyn L Waltner, DVM

Puget Sound Veterinary Group, PC
Mt. Vernon, WA



Outline

- History to consider & provide to Veterinarian
- Assessing your alpaca on farm
- Emergencies based on affected system



Outline of Emergencies

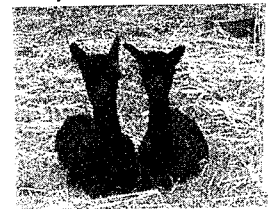
- Respiratory
 - Anaphylactic shock
 - Choanal atresia
 - Heat Stress
 - Pneumonia
 - Hypothermia
 - Airway Obstruction
- Cardiovascular
 - Hypovolemic shock
 - Mycoplasma haemolama
- Musculoskeletal
 - Burns
 - Lameness
 - Predator attack/skin injuries
 - Leg Strangulation
- Gastrointestinal
 - Diarrhea and weakness
 - Colic
 - Choke
 - Constipation
 - Ingestion of known toxic substance

Outline of Emergencies

- Urinary tract
 - Urinary blockage
 - Penile entrapment
 - Penile/Preputial prolapse
- Nervous System
 - Seizures
 - "Polio"encephalomalacia
 - Inability to Stand/Walk normally
- Reproductive
 - Vaginal prolapse
 - Uterine prolapse
 - Retained placenta
 - Dystocia
- Ocular
 - Trauma
 - Foreign Bodies

History

- Age
 - Neonate/cria
 - Weanling
 - Yearling
 - Adult
 - Geriatric
- Reproductive status
 - Breeding female/male, pregnant, Non-breeder
- Herd rank



History

- Feed/diet changes - any
- Pasture changes
- Weather changes
- Travel



Physical Exam

- Stance
 - Arched back, head down, recumbency (cushes, on side)
- Gait
- Lethargy/Depression
- Grinding teeth
- Drooling



Physical Exam (cont)

- Position in the herd
 - Separate or staying with them
- Fecal/Urine output
- Nose or Eye discharge
- Temperature
- Pulse
- Respirations



Puget Sound Veterinary Group Zoepp, Zoepke

Form with fields for patient information and medical history, including sections for 'PHYSICAL EXAM', 'LABORATORY', and 'DIAGNOSIS'. The text is small and partially illegible.

Normals

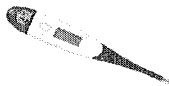
Temperature

Normal: 99-101.5 F

How to Take

Does it make sense?

Double check - ears



Normals

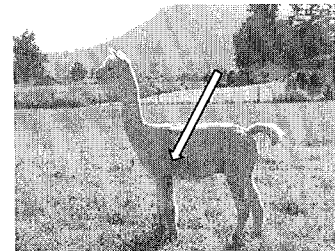
Pulse bpm (beats per minute)

Normal

Adult: 60-80

Cria: 70-100

How to take



Normals

Respiration bpm (breaths per minute)

Normal: 10-30

How to take

How is the animal breathing

Normally?

Open mouth?

Nostrils flaring?



What identifies an Emergency

- High rectal temperature, >103F, and lethargic
- Low rectal temperature, <99F, and lethargic
- Abnormal heart rate
 - Below 55 or above 90 (adult)
 - Below 60 or above 100 (cria)
- Unusual respiratory rate or noises
- Mouth breathing in newborn

> = greater than, < = less than

What identifies an Emergency

- Rapid swelling
- Fractures
- Head injuries, head tilting
- Continuous bleeding
- Prolapse: Rectal, vaginal, uterine, penile
- Unwillingness to rise or move

When to call

- Temperature >103.0F, pulse >100bpm
- Uncoordinated movements (ataxia)
- Seizures
- Unable to rise
- Diarrhea Adult >24hours, Cria >12hours
- Pregnant female
 - discomfort >2hours
 - in labor >1hour

When to call (cont)

- Drooling > 45 minutes or vomiting >5 minutes
- Not eating >24 hours, rancid breath
- Dam that has just given birth and has no milk
- Cria that can't stand after 2 hours
- Any questions or concerns

Respiratory Emergencies

- Anaphylactic shock
 - allergic reaction
- Choanal atresia
- Heat Stress
 - 80°F, 80% Humidity
- Pneumonia
- Hypothermia
- Airway Obstruction
 - Foreign body, abscess, tumor



Cardiovascular Emergencies

- Hypovolemic shock
 - Blood loss
- Mycoplasma haemolama



Musculoskeletal Emergencies

- Burns
- Lameness
 - Fractures
 - Muscle Strain
- Predator attack/skin injuries
- Leg Strangulation



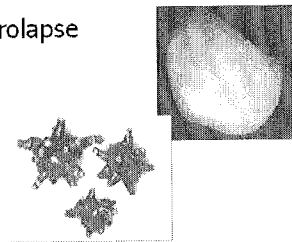
Gastrointestinal Emergencies

- Diarrhea and weakness
- Colic (abdominal pain)
 - GI blockage, GI torsion, GI entrapment, GI ulceration/rupture
- Choke
- Constipation
- Ingestion of known toxic substance



Urinary Tract Emergencies

- Urinary blockage
- Penile entrapment
- Penile/Preputial prolapse



Nervous System Emergencies

- Seizures
- "Polio"encephalomalacia
- Inability to Stand/Walk normally



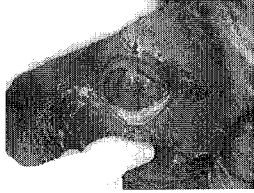
Reproductive Emergencies

- Vaginal prolapse
- Uterine prolapse
- Retained placenta
- Dystocia (difficulty giving birth)
 - Fetal malpositioning, Persistent hymen ring, uterine torsion



Ocular Emergencies

- Trauma
- Foreign Bodies



Questions?



Thank You!

Puget Sound Veterinary Group, PC
2115 Old Highway 99 S Rd
Mount Vernon, WA 98273

office@pugetsoundveterinarygroup.com
www.pugetsoundveterinarygroup.com
(360) 416-6944

Jacquelyn Waltner, DVM